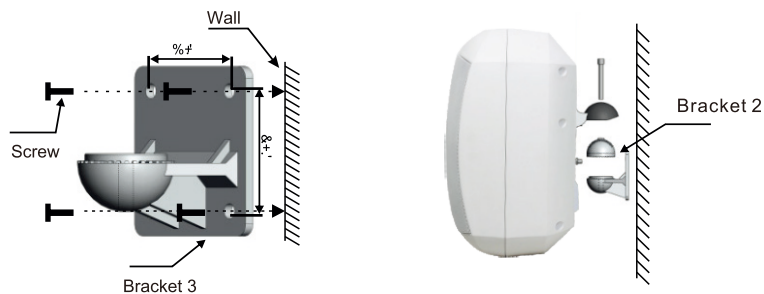
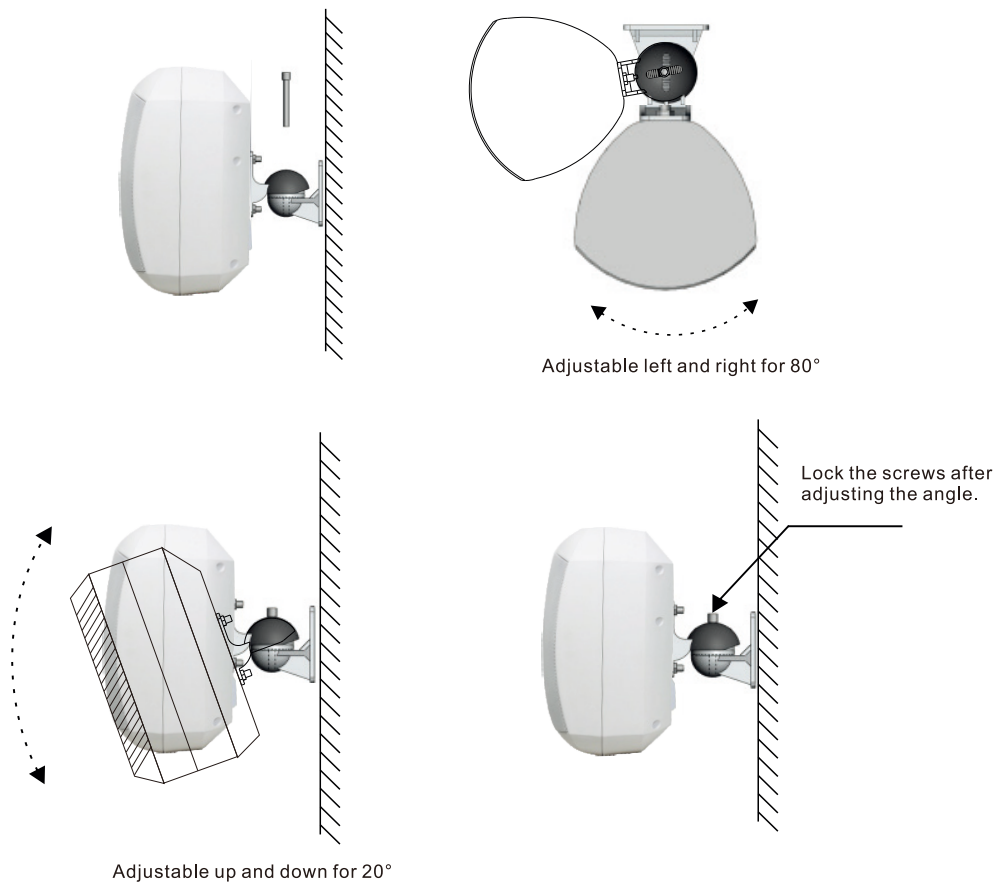


2. According to the installation plan, after drilling the hole position on the wall, the bracket 3 is fixed on the wall surface. Then the bracket 1, bracket 2, bracket 3 is assembled as shown. Make sure that the bracket is securely mounted (3 parts of the fastening bracket are supplied with screws.)



3. According to the installation plan in the adjustable range, adjust the most appropriate height, and then tighten the screws.



# User's Manual

# HPA

## Indoor/Outdoor Wall Mount Speaker

WS-650BK  
WS-650WH



Specifications are subject to be changed without notice.



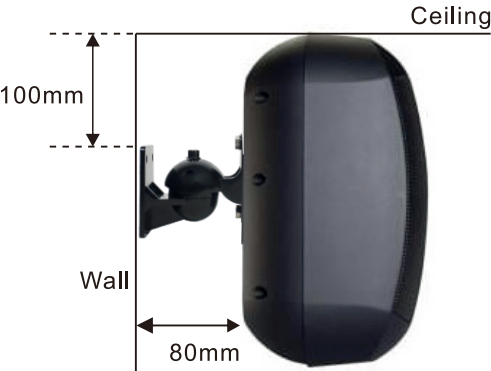
# User's Manual

## Features

- ▶ All weather loudspeakers for music and speech.
- ▶ Stylish design with great sound
- ▶ IP66 waterproof finish for all extreme weather applications
- ▶ 6.5" weatherproof woofer and 1" silk tweeter 2-way speaker system
- ▶ ABS enclosure, stainless metal grille & stainless mounting bracket
- ▶ Power output 40W-20W-10W-OFF & 8Ω 60W
- ▶ 70V/100V speaker with power tapping or as a low impedance 8 Ohm speaker
- ▶ Supplied with 20 - 80° rotatable bracket for horizontal and vertical installation angle adjustment
- ▶ Black and white color optional

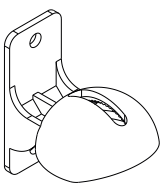
## Specification

SPECIFICATIONS	
Power Taps	40W/20W/10W/OFF/8Ω
Power at 8ohm	60W
SPL@ 1M	94±3dB
Max SPL@ 1M	112dB
Freq. Response	65-20KHz
Dispersion Angel	Vertical: 80° and Horizontal: 90° (1KHz)
Product Size	195×185×315mm
Installation	Wall Mount
Enclosure Material	ABS enclosure, stainless metal grille & stainless mounting bracket
Weight	3.5kg
Finish	WhiteBlack
Speaker	6.5" weatherproof woofer and 1" silk tweeter

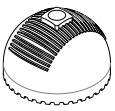


# User's Manual

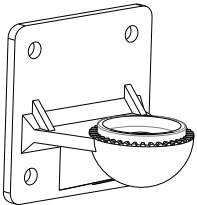
## Installation



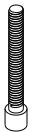
Bracket 1



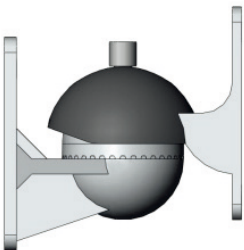
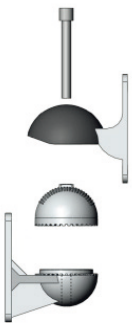
Bracket 2



Bracket 3



Screw rod



## Bracket Accessories

Split the mounting bracket into 1,2,3, three parts. Fit two six point screws into the mounting slot of the speaker's back (parallel to the wall speaker to help fit the screws)

**!** When placing speakers horizontally, be careful not to touch and load the front of the speakernet with hard facing, otherwise it will deform the front net.

1. Fix the Bracket 1 as shown, tighten the screws according to the installation plan

